

Advertisement at Lucknow Metro Stations & other civil structure

LUCKNOW METRO



Contact Person for Lucknow & Kanpur
Name – Sri. Vikas Khandelwal
Contact - 9336237978

Name – Sri. Narendra Nigam
Contact - 9305567446

OPERATIONAL CORRIDORS

AT PRESENT				
<u>Corridors</u>	<u>Total No. of Stations</u>	<u>Underground (No. of Stations)</u>	<u>Elevated (No. of Stations)</u>	<u>Total length (in kms)</u>
LINE 1 (CCS Airport to Munshipulia)	21	4	17	23

Media Summary

City	Media	Type	Units	Sq.ft	Average rates (Rs. per Month)
Lucknow	Metro Pillar-Triple side	Back Lit	1	44307	50000 / pillar
	Metro Pillar-Double side	Back Lit	507		30000 / pillar
	Metro Pillar-Single side	Back Lit	78		15000 / pillar
Lucknow	Metro Duct Panel	Front Lit / Non Lit	11	2765	75000 - 200000 / panel
Lucknow	Metro Track Panel	Front Lit	11	4452	
Lucknow	Metro Ramp Panel	Front Lit	2	544	
Lucknow	Metro Billboard	Back Lit / Front Lit	8	2350	30000 - 75000 / billboard
Lucknow	Metro Station Signage	Back Lit / Non Lit	166	9485	500 - 600 per sq.ft
Lucknow	Metro Lift Glass / Glass / Wall	Non Lit	79	7036	500 per sq.ft
Lucknow	Metro Digital Pod	Digital	56	1309.04	8000 / pod
			919	72248.04	

*Note: Printing , Installation and GST is additional



Metro Pillar Sample Photo, Size:4.5x9, Back Lit



Metro Pillar Sample Photo, Size:4.5x9, Back Lit



Metro Pillar Sample Photo, Size:4.5x9, Back Lit



Metro Pillar Sample Photo, Size:4.5x9, Back Lit



Metro Pillar Sample Photo, Size:4.5x9, Back Lit



Metro Pillar Sample Photo, Size:4.5x9, Back Lit



Metro Pillar Sample Photo, Size:4.5x9, Back Lit



Metro Pillar Sample Photo, Size:4.5x9, Back Lit

Advertisement Panels

- Visibility is minimum of 100 m
- All panels are front lit



Nehar Chauraha Facing Alambagh-30x7 , Front Lit



Transport Nagar Facing Airport-40x7, Front Lit



Alambagh Bus Stand facing Bus Stand-30x15, Front Lit



Charbagh Facing Railway Station-50x12, Front Lit



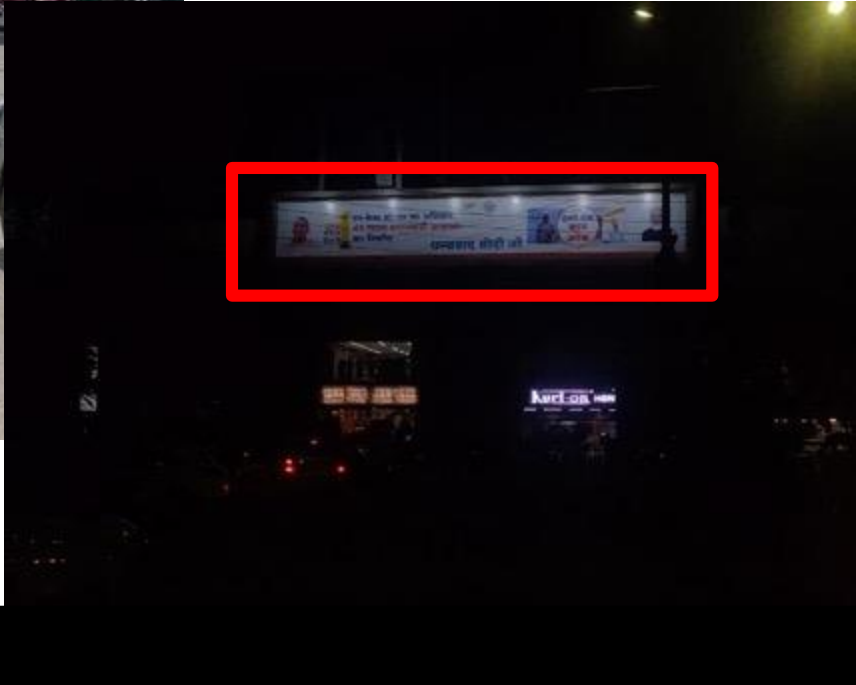
Hazratganj Facing Hazratganj Chauraha-32x8, Front Lit



Parivartan Chowk Facing Hanuman Setu – 50x8, Front Lit



Nishatganj Flyover Facing Hazratganj – 50x8x2, Front Lit



Neelgiri Fcg. B Block – 50x8, Front Lit



Bhootnath Facing Bhootnath Market-25x7 & 30x7, Front Lit



Bhootnath Facing Road-20x10, Front Lit



Munshipulia Chauraha Facing Khurram Nagar – 50x8, Front Lit

Signages & Glass panels

- Head on media display in stations which a passenger can see during waiting time or while travelling.
- Signages placed nearby Ticket window, entry / exits from ground level & concourse, platform entry / exits.
- Glass panels at Hazratganj catches traffic on road level
- In Hazratganj SAVs are placed at track level so that no eye can miss the advt.



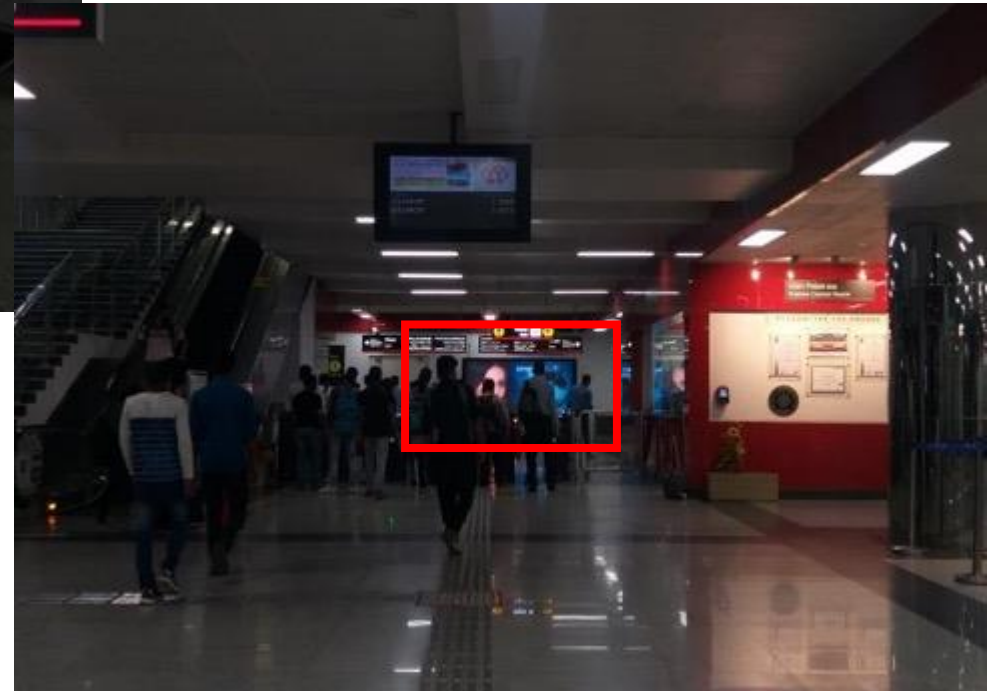
Ground Level Entry / Exit , Metro Signage, Size : 10.5x5.5, Back Lit



Ground Level Entry / Exit , Metro Signage, Size : 10.5x5.5, Back Lit



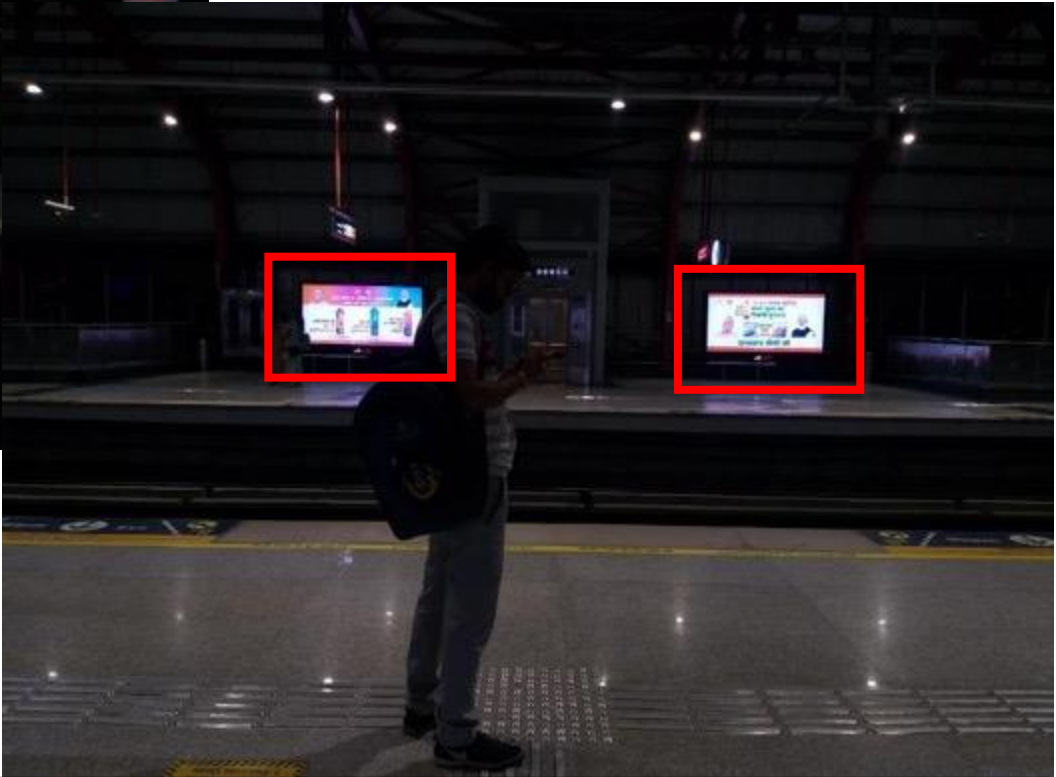
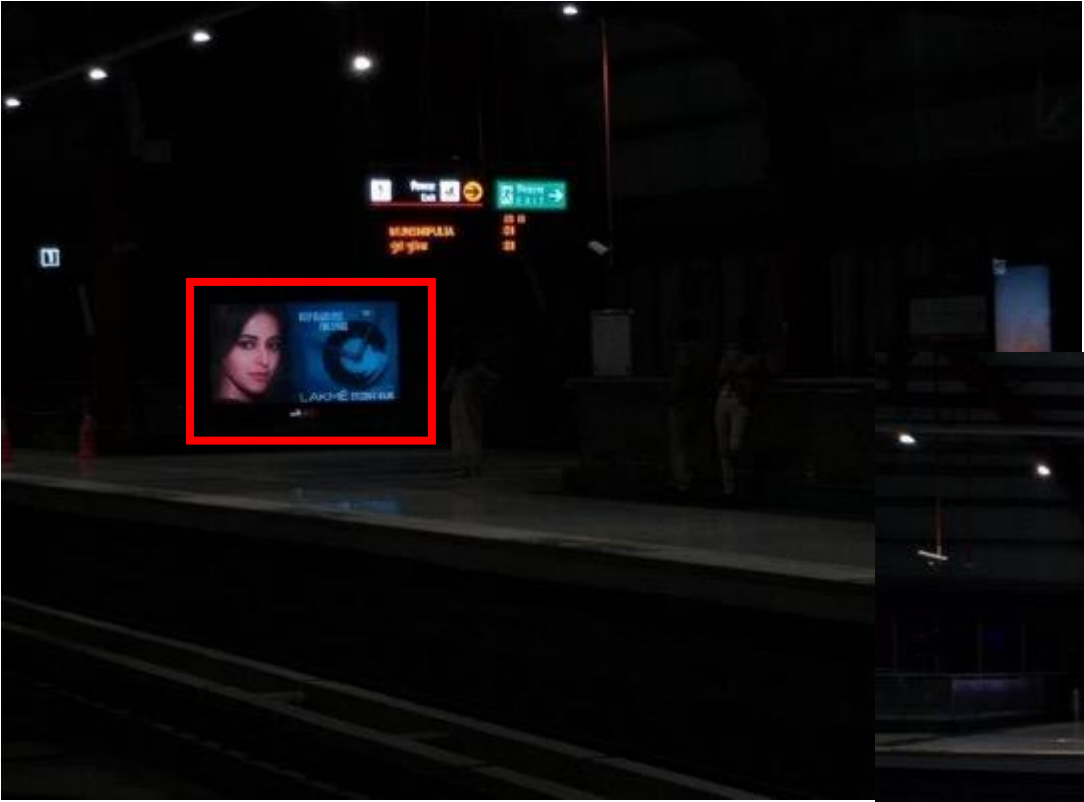
Concourse Entry / Exit , Metro Signage, Size : 10.5x5.5, Back Lit



Concourse Entry / Exit , Metro Signage, Size : 10.5x5.5, Back Lit



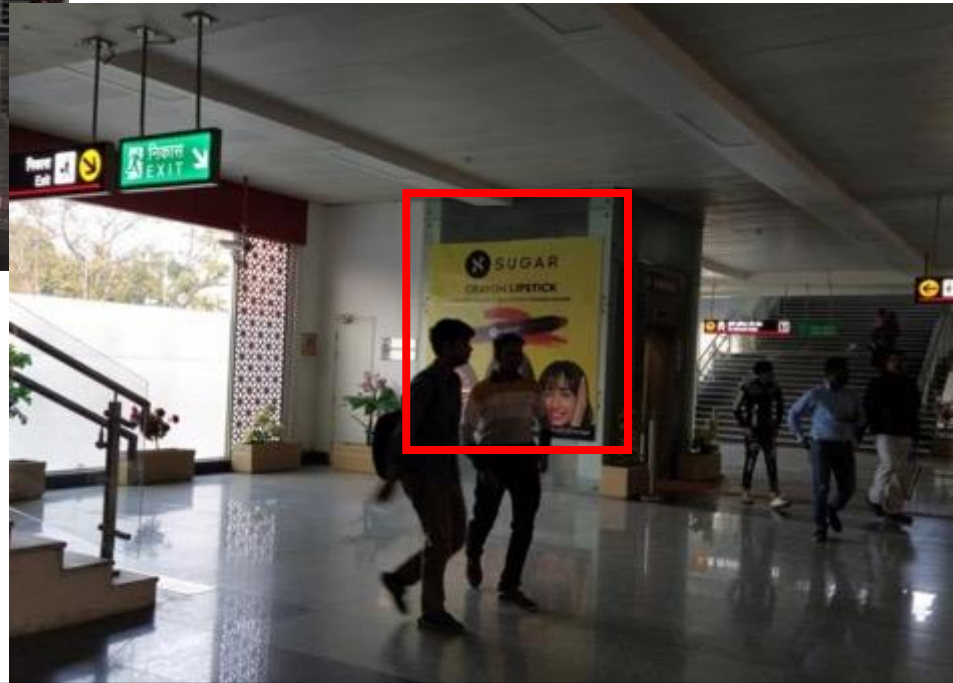
Platform Area , Metro Signage, Size : 9x4.5 & 10.5x5.5, Back Lit



Platform Area , Metro Signage, Size : 9x4.5 & 10.5x5.5, Back Lit



Concourse Area, Metro Signage, Underground Station, Size : 10.5x5.5, Back Lit



Concourse Area , Metro Glass, Size : 8x8, Non Lit



Platform Area, Metro Wall, Underground Station, Size : 32x12, Non Lit



Hazratganj Metro Station – DRM Entry – 12x8 & 12x7 – 1, Glass



Hazratganj Metro Station – Mayfair Entry – Back Side Glass of Entry - 4x5 - 3, Glass



Hazratganj Metro Station – Mayfair Entry – Glass Parallel to Road – 12x7 & 12x8 - 1, Glass



Hazratganj Metro Station – LIC HFL Entry – Back Side Glass of Entry – 5x8 - 3, Glass



Hazratganj Metro Station – LIC HFL Entry – Glass Parallel to Road – 12x8 & 12x10 - 1, Glass



Hazratganj Metro Station – DRM Entry – Back Side Glass of Entry – 6x5 - 2, Glass

Digital Pod

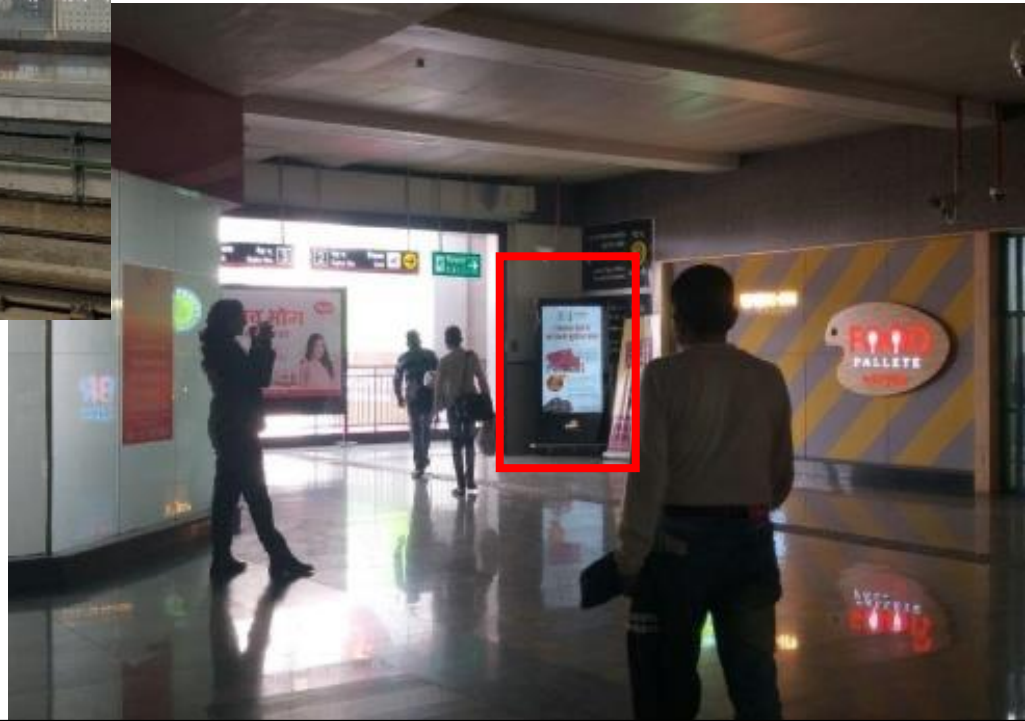
- This covers the whole station and are placed where passengers cannot miss.
- The pods are placed in very strategic locations like ticket counters, entry / exits, concourse & platform waiting areas.



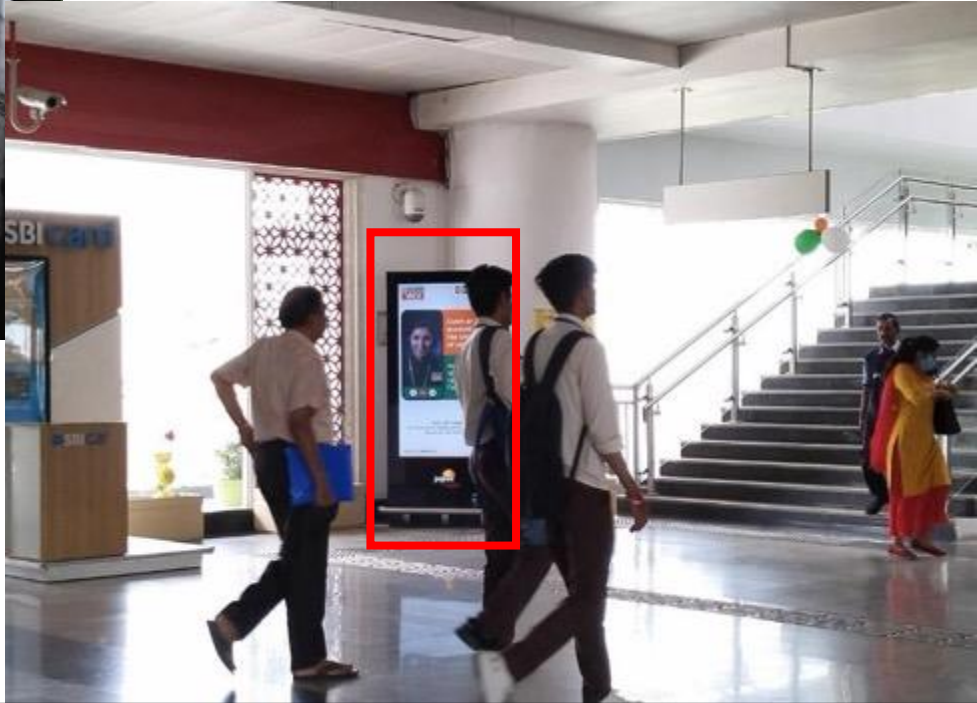
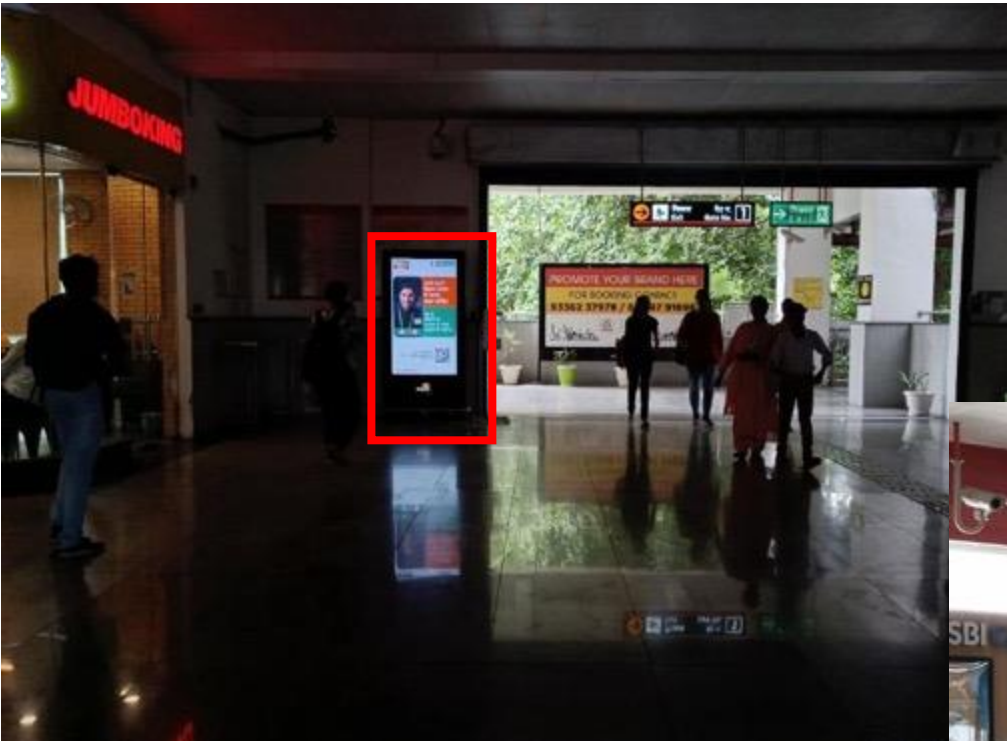
Metro Digital Pods, Size : 55 inch, Digital



Metro Digital Pods, Size : 65 inch, Digital



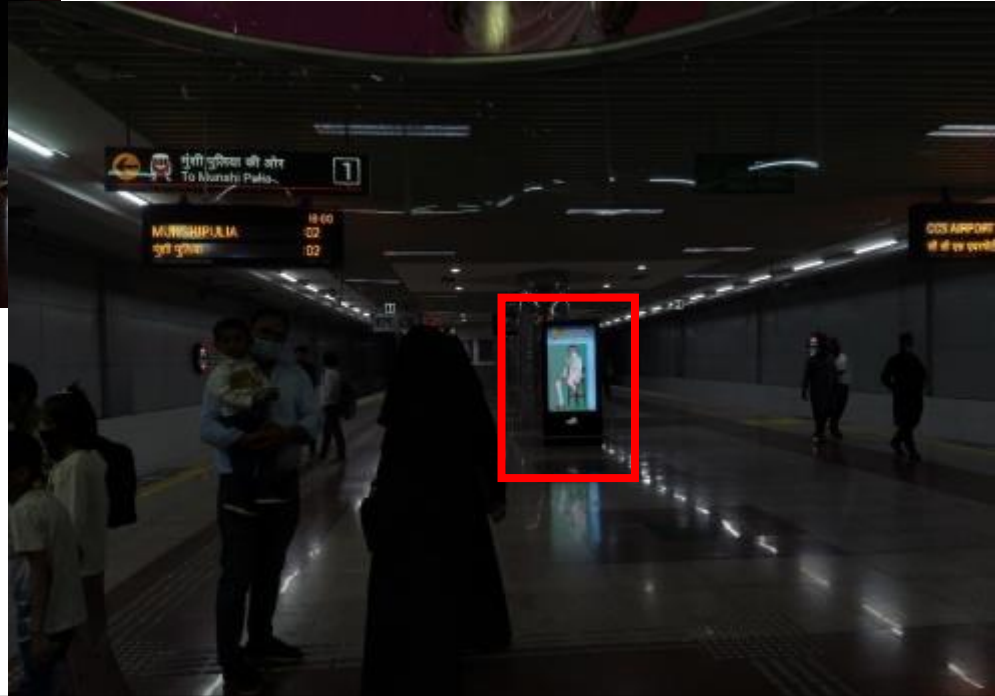
Metro Digital Pods, Size : 65 inch, Digital



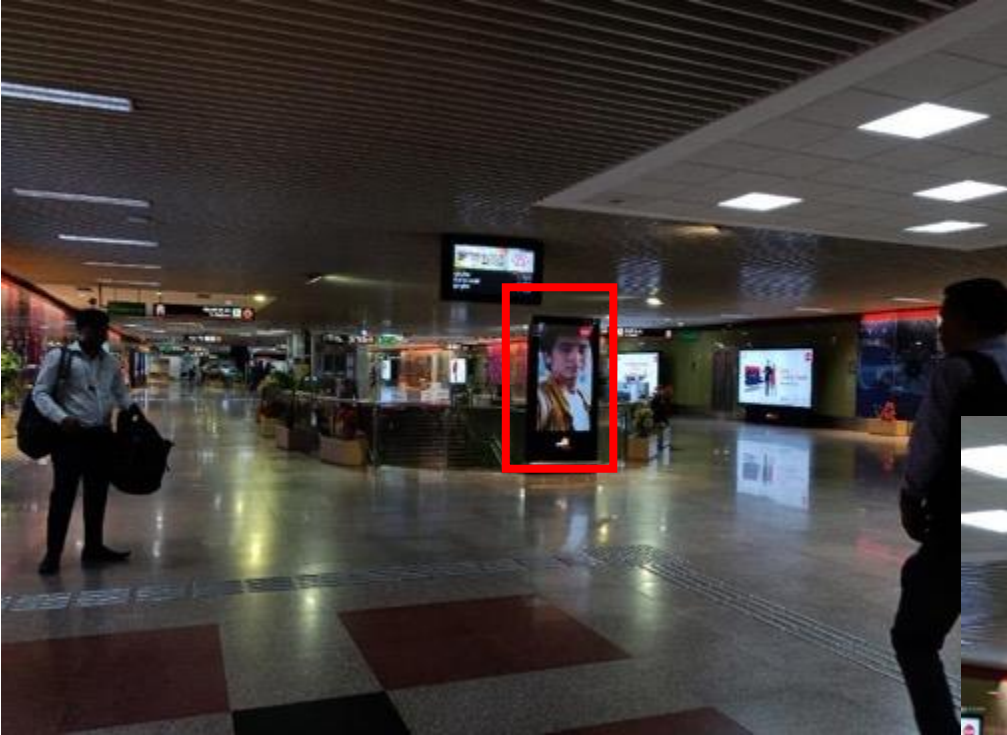
Metro Digital Pods, Size : 65 inch, Digital



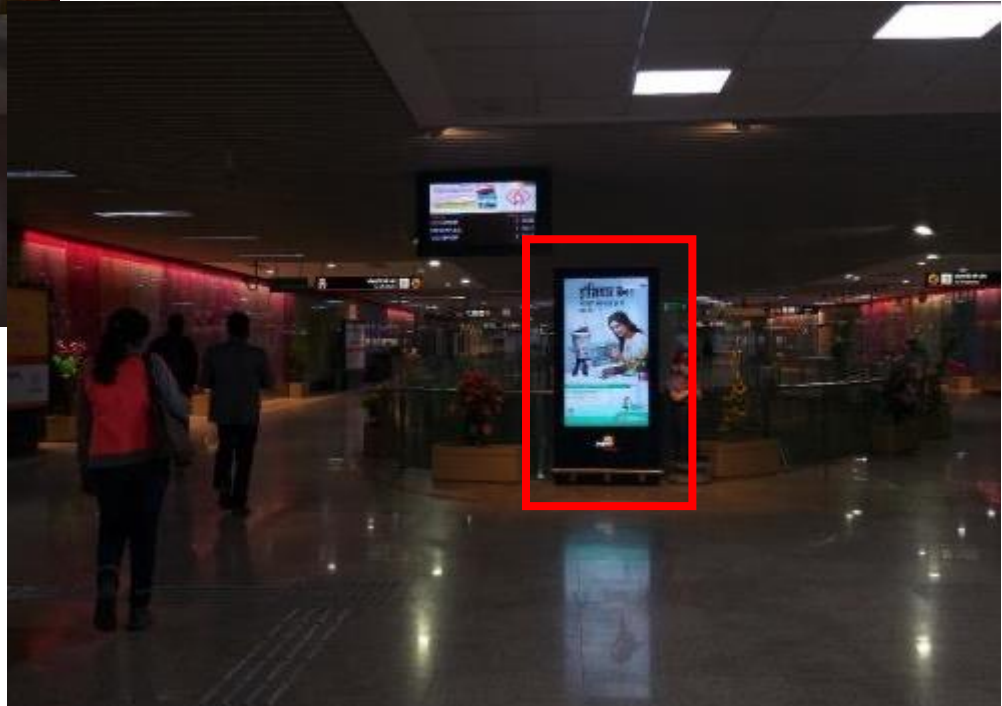
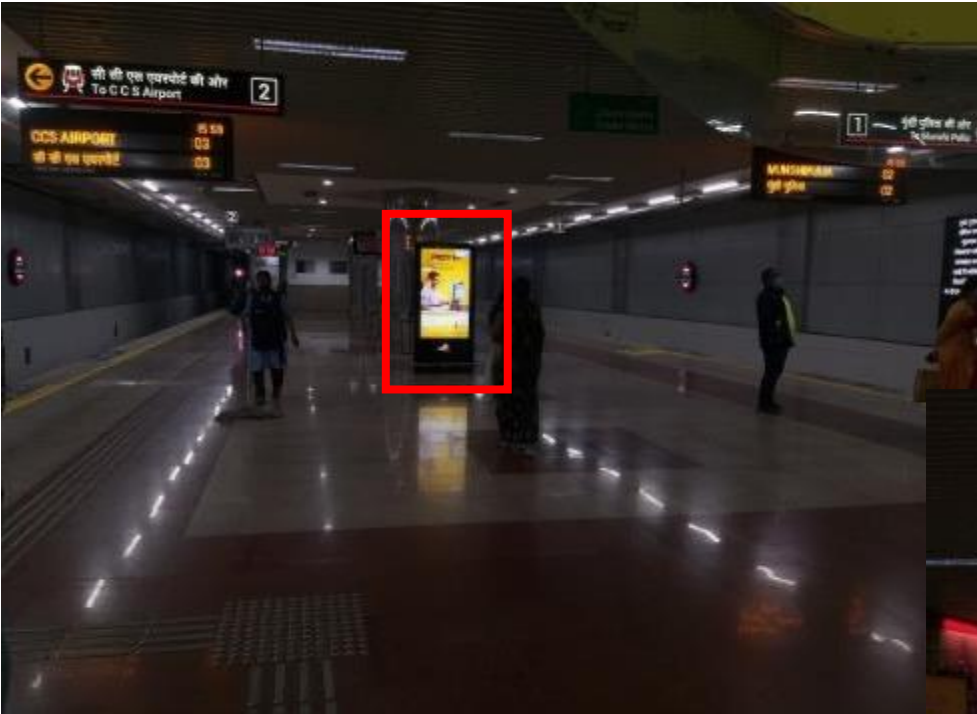
Metro Digital Pods, Size : 65 inch, Digital



Metro Digital Pods, Size : 65 inch, Digital



Metro Digital Pods, Size : 65 inch, Digital



Metro Digital Pods, Size : 65 inch, Digital

Promotional / Activities Zones



Promotional Zone For BYJU'S



Promotional Zone For SBI CARDS

Advertisement at Kanpur Metro Stations & other civil structure

Kanpur Metro



**Contact Person for Kanpur
Name - Vikas Khandelwal
Contact - 9336237978**

**Name - Narendra Nigam
Contact - 9305567446**

**Name - Pankaj Jain
Contact - 9918801935**

Media Summary

City	Media	Type
Kanpur	Metro Pillars	Back Lit
Kanpur	Metro Duct Panels	Front Lit
Kanpur	Metro Pillar Wrap	Non Lit



Nov 10, 2024 0



22-Oct-2024 19:26:14
Corner
Kanpur Division
Uttar Pradesh

Metro Pillars



Metro Pillars



Metro Pillars



Metro Duct Panels



Metro Duct Panels



Metro Pillar Wrap

Advertisement in Agra Metro Stations & Other Civil Structure



Contact Person
Name – Sri. Sanjay Rawat
Contact - 9837024113

Name – Sri. Subhashish
Contact - 8265835433

Media Details

Capt. Shubham Gupta to ITC Mughal Hotel :

6 Metro Pillars

Size : 8ft.x 4ft.

Visibility : Single Site



Captain Shubham Gupta (Metro Station)



Captain Shubham Gupta (Metro Station)



Captain Shubham Gupta (Metro Station)

Fatehabad Road Metro station

Media Details

Fatehabad Road To Hotel Howard Plaza :
6 Metro Pillars
Size : 8ft.x 4ft.
Visibility : Single Site



Fatehabad Road (Metro Station)

फतेहाबाद रोड FATEHABAD ROAD



Fatehabad Road (Metro Station)



Fatehabad Road (Metro Station)



Fatehabad Road (Metro Station)

THANK YOU